

## KWDH-2 Heater for Propeller-type Wind Speed/Direction Sensor

The KWDH-2 heater prevents the wind direction sensor part of a propeller-type wind vane/anemometer unit from freezing. Because both the heater and the heater cable are mounted externally on the wind vane/anemometer, there is no need to change internal setup, which means the KWDH-2 can be used on any resin-body sensor made by Komatsu Factory.



### SPECIFICATIONS

#### Heater module

##### Components

1 heated sensor for wind vane/anemometer  
1 connector box (w/built-in thermostat)

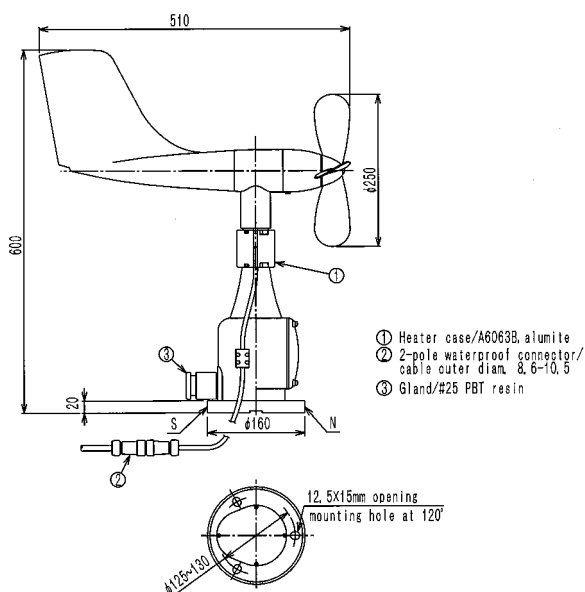
##### Heater

Capacity: Approx. 9.3 W  
Power source: AC 100 V

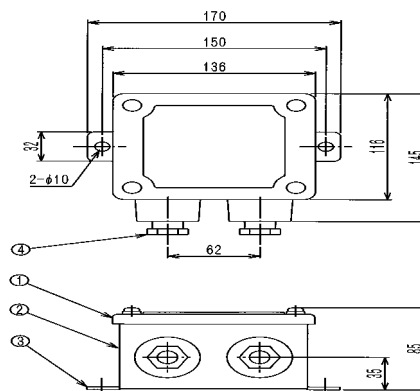
##### Thermostat

Model 60C  
ON temp.: Approx. 6°C  
OFF temp.: Approx. 16°C  
Capacity: AC 125V 6A

### Sensor Dimensions



### Connector box Dimensions



Cover / SUS304

Body / FRP

Mounting Flange / SUS304

2 cord holders 15b cable  
diam. 7.5-9.8



**KOMATSU FACTORY CO.,LTD.**

WEATHER INSTRUMENTS FABRICATION

1-12-13 Higashiyama Meguro-ku Tokyo 153-0043 Japan

TEL : 03-3719-7131

FAX : 03-3719-7134

e-mail : [info@komatsuins.co.jp](mailto:info@komatsuins.co.jp)