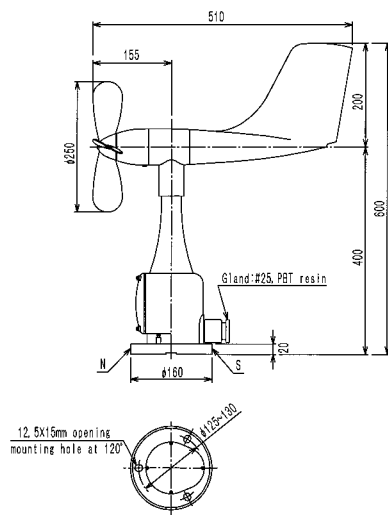


KWR-631 Propeller-type Recording Wind Vane/Anemometer (3-Element)

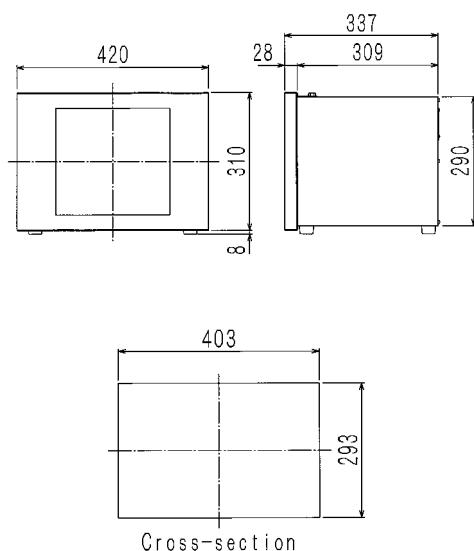
The KWR-631 records both instantaneous and average wind speeds and wind direction, which can be switch-selected for either instantaneous or average. Data is cleanly recorded using cartridge pens, avoiding smearing and smudging common with siphon-type pens. A servo drives the drum, providing the torque needed for reliable operation on boats or in other situations where motion is a factor. A terminal jack on the rear of the recorder unit allows for convenient connection to a wind speed and direction indicator. Meanwhile, the rear of the unit also has terminal jacks for providing a separate analog signal (0-1 V) for each element.



Sensor Dimensions



Recorder Dimensions



SPECIFICATIONS

Propeller-type wind speed/direction sensor (W611)

Speed component	Propeller-type AC generator
Direction component	Synchro motor vane
Wind run sensor (option)	60 m wind run, electric contact output
Startup threshold	<2 m/s
Weatherability	Winds ≥ 90 m/s
Wind speed output	45 V AC ± 1 V at winds of 60 m/s
Materials	Vane: glass & polyester resin Other components: polycarbonate resin
Paint	Standard 8YR7.3/1.3
Weight	Approx. 3.0 kg

Three-element recorder (WR7110)

Recording method	Arc-writing cartridge pens
Pen drive	Servo
Chart paper	Scroll-type
Recorded range	Instantaneous speed: 0-60 m/s Average speed: 0-50 m/s Direction: 16 cardinal points or 540° (inst. or avg.)
Chart width	Inst. speed: 90 mm Avg. speed: 60 mm Dir.: 60 mm
Accuracy	Speed: ± 0.5 m/s at winds ≤ 10 m/s $\pm 5\%$ at winds > 10 m/s Direction: $\pm 5^\circ$
Paper feed speed	15 mm/h
Cont. recording	1 month
Paper feed device	Battery-powered watch (quartz)
Watch battery/life	One 1.5 V battery (D cell) One year
Power source	100 V AC $\pm 10\%$, 50/60 Hz
Power consumption	100 V AC 18 VA
Usage conditions	-10 to 50°C 35 to 85% RH
Paint	Door: Munsell N1.0 Case: Munsell N7
Weight	Approx. 20 kg
Output	Instantaneous speed: 0-1 V (winds of 0-60 m/s) Average speed: 0-1 V (winds of 0-60 m/s) Instantaneous direction: 0-1 V (0-540°) Average direction: 0-1 V (0-540°) Impedance: $\leq 500\Omega$



KOMATSU FACTORY CO.,LTD.

WEATHER INSTRUMENTS FABRICATION

1-12-13 Higashiyama Meguro-ku Tokyo 153-0043 Japan

TEL : 03-3719-7131

FAX : 03-3719-7134

e-mail : info@komatsuins.co.jp