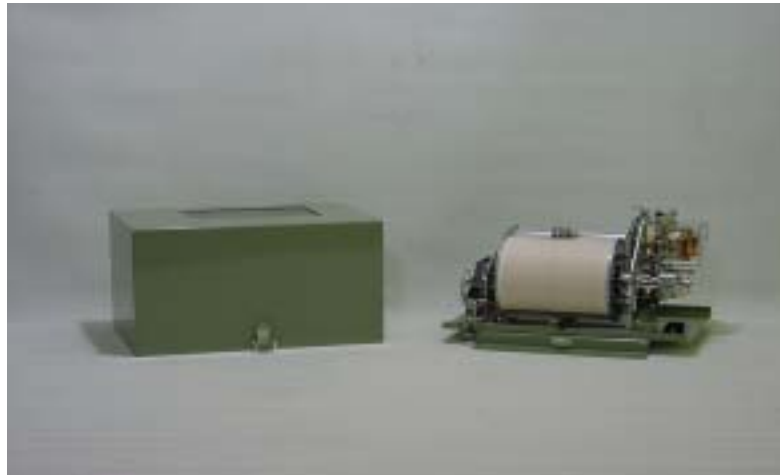


## KRE Series Extensometers

A KRE Series extensometer continuously measures ground surface displacement and uses cartridge pens to directly record that movement onto chart paper wound on a cylindrical drum. A motion stake is inserted into the moving earth surface to be monitored and another stake is fixed to a landslide monitor. The two stakes are connected via an Invar wire and any minute displacement between the two points is detected and recorded.



**NOTE:** The alarm contact is set at the factory to switch to ON whenever land movement exceeds a predetermined parameter within the one-hour period after operation commences or within any succeeding hour thereafter. When land movement does not exceed the specified parameter per hour, the alarm contact remains in OFF status.

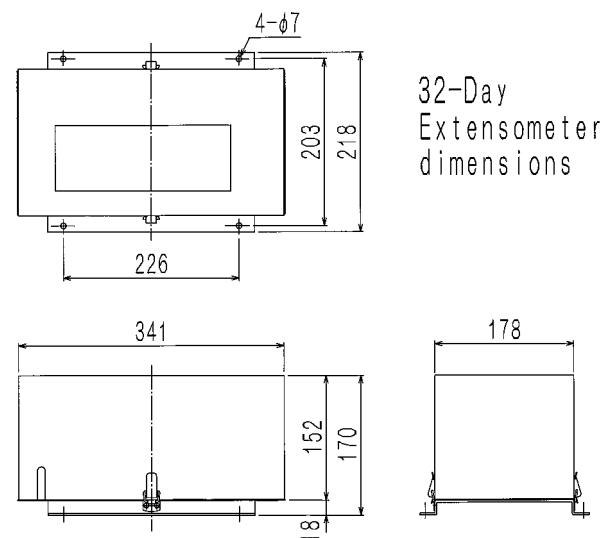
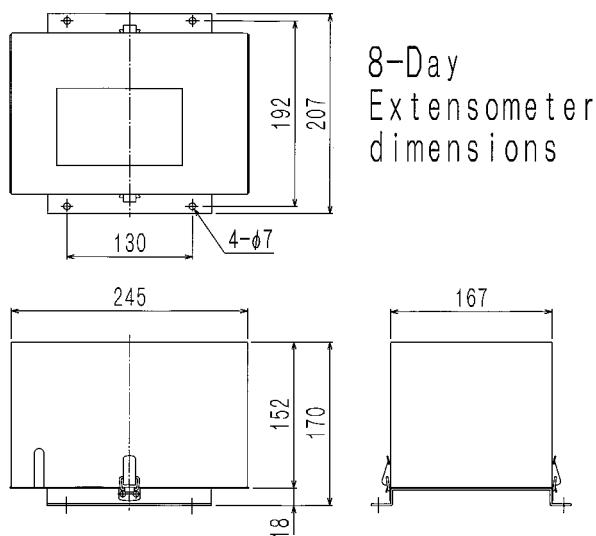
### SPECIFICATIONS

#### 8-Day Extensometer KRE-8, KREA-8 (w/alarm)

**Measurement range** 0-60 mm (min. increment 0.2mm)  
**Recorded ratio** 5X  
**Paper feed speed** 4 mm/h for 1-day use or  
 (Selectable) 0.5 mm/h for 8-day use (12 mm/day)  
**Alarm contact** No-voltage output  
 (Selectable between  $\pm 2$  mm or  $\pm 4$  mm)  
**Power source** One C-cell battery  
**Size** Approx. 248 × 207 × 170 mm  
**Weight** Approx. 5 kg

#### 32-Day Extensometer KRE-32, KREA-32 (w/alarm)

**Measurement range** 0-60 mm (min. increment 0.2mm)  
**Recorded ratio** 5X  
**Paper feed speed** 1 mm/h for 8-day use (24 mm/day)  
 (Selectable) 0.25 mm/h for 32-day use (6 mm/day)  
**Alarm contact** No-voltage output  
 (Selectable between  $\pm 2$  mm or  $\pm 4$  mm)  
**Power source** One C-cell battery  
**Size** Approx. 344 × 218 × 170 mm  
**Weight** Approx. 6.5 kg



**KOMATSU FACTORY CO.,LTD.**

WEATHER INSTRUMENTS FABRICATION

1-12-13 Higashiyama Meguro-ku Tokyo 153-0043 Japan

TEL : 03-3719-7131

FAX : 03-3719-7134

e-mail : [info@komatsuims.co.jp](mailto:info@komatsuims.co.jp)