

KW-71-1 Cup-type Indicating Anemometer with Alarm Function

The KW-71-1 includes a sensor and an indicator unit. The indicator can be set to sound an alarm buzzer when wind speed exceeds a user-defined speed. The KW-71-1 can also be connected to operate other electrical devices when the alarm speed is exceeded.



APPLICATIONS

Cranes, recreational facilities such as golf driving ranges, ski lifts, cable cars, etc.

FEATURES

A buzzer alerts users to dangerously high-speed winds. Can also be electrically connected to manage other electrical apparatus.

SPECIFICATIONS

Components

Sensor: 4-pole coreless AC generator
Indicator: rectifying voltmeter (meter relay)

Measurement range 2-60 m/s

Alarm signal speed range also 2-60 m/s

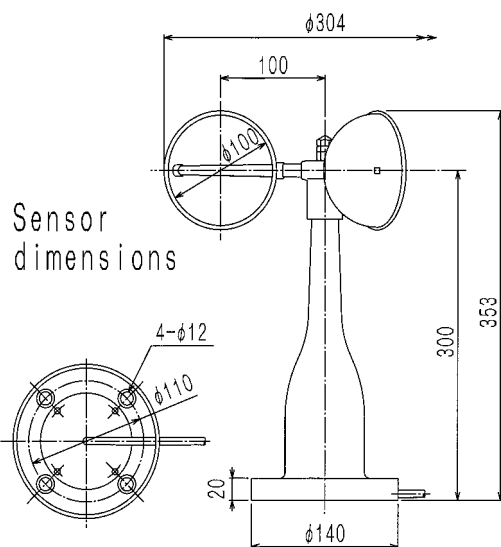
Accuracy ± 0.5 m/s at winds ≤ 10 m/s
 $\pm 5\%$ at winds > 10 m/s

Weatherability Winds ≥ 90 m/s

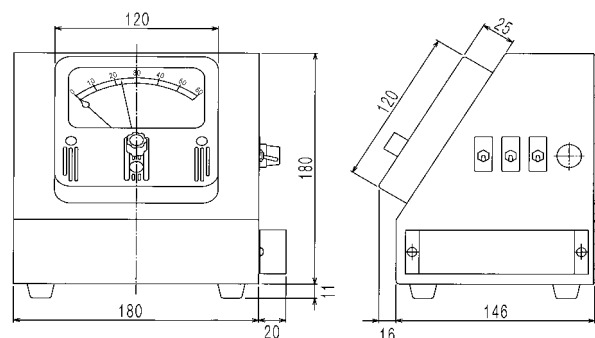
Power 100 V AC, 50/60 Hz

Size/weight

Sensor: approx. 304 mm diam. \times 353 mm, 1.0 kg
Indicator: approx. 200 \times 166 \times 191 mm, 2.4 kg



Indicator dimensions



KOMATSU FACTORY CO.,LTD.

WEATHER INSTRUMENTS FABRICATION

1-12-13 Higashiyama Meguro-ku Tokyo 153-0043 Japan

TEL : 03-3719-7131

FAX : 03-3719-7134

e-mail : info@komatsuims.co.jp